



Application Note

CUSTOMER	ZW002
PRODUCT NAME	电源供应器/POWER SUPPLY
OUR P/N	
OUR MODEL NO	SAW-1200500
CUSTOMER NO	
STANDARD	EN60950
RATING	I/P:AC100-240V 0.3A 50-60HZ
	O/P: DC12V 500mA
REMARK	英规/BS
REVISION	00

Yingyuan Electronics			
DRAW BY	CHECKED BY	APPROVED BY	DATA
李思人			2011-02-17

CUSTOMER

深圳市盈源电子有限公司

Shenzhen Yingyuan Electronics co.,Ltd

地址：中国深圳市宝安区西乡九围勒竹角新工业园 3 栋

Address: ROOM 4,BLDG 3 JIU WEI LE ZHU JIAO NEW IND ZHONG XI XIANG
BAO AN SHEN ZHEN GUANGDONG CHINA

TEL: +86-0755-29785866 FAX: +86-0755-29785684 <http://www.szyingyuan.com>

INDEX

1.0	INTRODUCTION.....	Page3
2.0	INPUT REQUIREMENTS.....	Page3
3.0	OUTPUT REQUIREMENTS.....	Page3
4.0	PERFORMANCE SPEC	Page4
5.0	PROTECTION REQUIREMENTS.....	Page4
6.0	ENVIRONMENTAL.....	Page4
7.0	SAFETY REQUIREMENTS AND CERTIFICATION.....	Page4
7.1	Regulatory Standard.....	Page5
7.2	Dielectric withstand (Hi-pot) test.....	Page5
7.3	Insulation.....	Page5
8.0	APPEARANCE DRAWING.....	Page6
9.0	NAME PLATE.....	Page7
10.0	BOX DRAWING.....	Page8

1.0 INTRODUCTION

This specification defines the performance characteristics for a class 2 adapter, single-phase watt.single output level power supply

- ◆ Very low standby power achieved
- ◆ Over load Latch-Off protection during either(a)specified power threshold requirements or(b)Shot circuit condition
- ◆ Reliability level or 50000 hours MTBF& 0.5% annual field failure rate@25°C

2.0 INPUT REQUIREMENTS

- ◆ AC Input voltage rating 100Vac to 240Vac
- ◆ AC Input voltage range 90Vac to 254Vac
- ◆ AC Input frequency range 47Hz to 63Hz
- ◆ Max. In-rush current 30A for 100Vac at full load
75A for 240Vac at full load
- ◆ Input current 0.3A Max @ 90V/60Hz full load
- ◆ Standby power 0.3W Max @ 254V/50Hz no load

3.0 OUTPUT REQUIREMENTS

- ◆ Output voltage +12V
- ◆ Output voltage tolerance +/-0.6V
- ◆ Min load current 0 mA
- ◆ Max load current 500 mA

- ◆ Line regulation +/-1%
- ◆ load regulation +/-5%
- ◆ Ripple & Noise 120mVp-p (max)

DC-20MHz/Ripple and Noise is measured on output connector with 20MHz oscilloscope bandwidth differentially with a 10uF electrolytic and 0.1uF ceramic capacitors across output

4.0 PERFORMANCE SPEC

- ◆ Total output power 6W typical
- ◆ Efficiency 60% min@ 100~240Vac50/60Hz with full load
- ◆ Hold up time 10 sec.min.@ 100Vac/60Hz with full load
- ◆ Turn on delay time 3sec.max.@ 100Vac/60Hz with full load
- ◆ Switching frequency 65K Hz typical

5.0 PROTECTION FEATURE

- ◆ Over-voltage protection Output shut down when output voltage exceeds_
- ◆ Over-current protection Output shut down(Auto restart)when output voltage exceeds
- ◆ Short circuit protection Output shut down(Auto restart)
- ◆ Over-temperature protection output shut down when case face temperature exceeds 65°C

6.0 ENVIRONMENTAL

- ◆ Operation temperature -20°C to +40°C
- ◆ Operation humidity 20% to 90% R.H.

◆ Storage temperature -20°C to +75°C

◆ Storage humidity 0% to 90% R.H.

7.0 SAFETY REQUIREMENTS AND CERTIFICATION

7.1 Regulatory Standard

◆ The power supply shall complied the following international regulatory standards

For short	country	Certified Status	Standard
CE	Europe/欧洲	approval	EN60950/EN55022

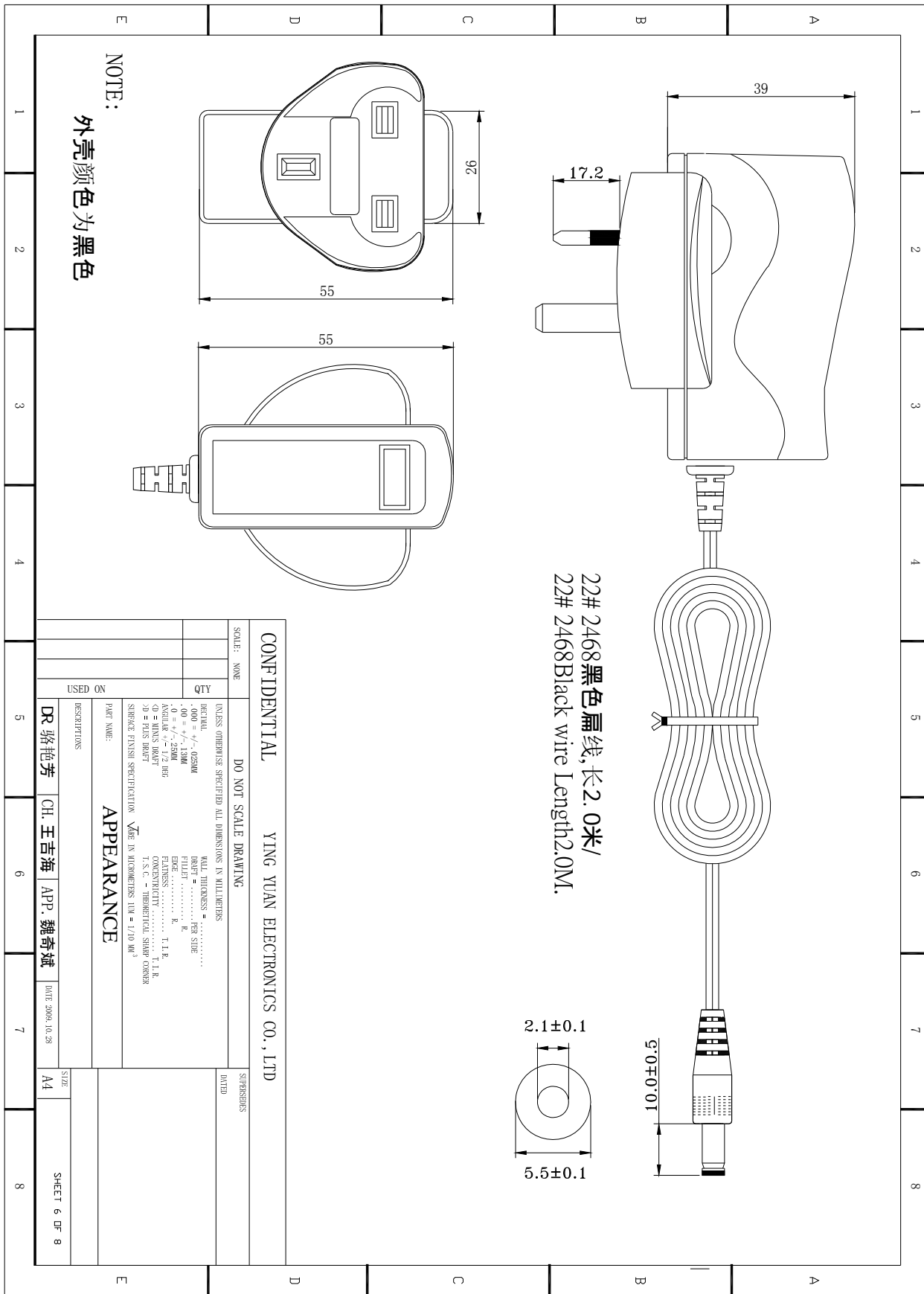
7.2 Dielectric withstand (Hi-pot) test

◆ Input to output 3000Vac 10mA /min

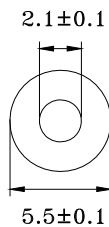
7.3 Insulation

◆ Input to output DC 500V 10M ohm min

8.0 APPEARANCE DRAWING

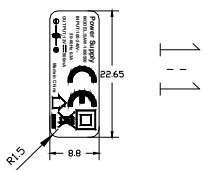
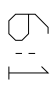

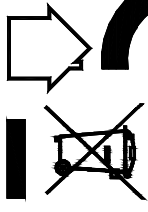


NOTE:
外壳颜色为黑色



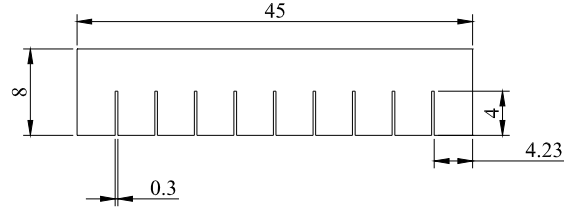
SCALE: NONE				DO NOT SCALE DRAWING			
CONFIDENTIAL				YING YUAN ELECTRONICS CO., LTD			
<small>UNLESS OTHERWISE SPECIFIED, ALL DIMENSIONS IN MILLIMETERS</small> <small>PROVAL</small> <small>PROVAL</small> <small>.000 = +/- 0.2500</small> <small>0.05 = +/- 0.1300</small> <small>0.1 = +/- 0.2500</small> <small>0.2 = +/- 0.5100</small> <small>0.5 = +/- 1.2700</small> <small>1.0 = +/- 2.5400</small> <small>2.0 = +/- 5.0800</small> <small>5.0 = +/- 12.7000</small>		<small>WALL THICKNESS =</small> <small>BRAUT =</small> <small>FEZ SIDE</small> <small>FILET =</small> <small>R</small> <small>EDGE =</small> <small>R</small> <small>FILAKNESS =</small> <small>R</small> <small>CONCENTRICITY =</small> <small>T.L.R</small> <small>PERPENDICULARITY =</small> <small>L.P</small> <small>1.5 = 0.03750</small> <small>2.0 = 0.05000</small> <small>3.0 = 0.07500</small>		<small>DATE</small> <small>SUPERSEDES</small>		<small>DATE</small> <small>SUPERSEDES</small>	
PART NAME: APPEARANCE				DATE: 2009.10.28			
DR 骆艳芳		CH 王吉海		APP 魏奇斌		DATE 2009.10.28	
DESCRIPTIONS		USED ON		SIZE		SHEET 6 OF 8	

9.0 NAME PLATE

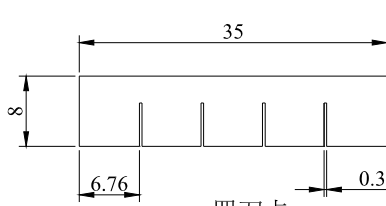
1	2	3	4	5	6	7	8
E	D	C	B	A			
<div style="display: flex; justify-content: space-between; align-items: center;"> <div style="width: 45%;"> <p style="font-size: 2em; font-weight: bold;">NOTE:</p> <p style="font-size: 1.5em; font-weight: bold;">黑底银字</p> </div> <div style="width: 45%; text-align: right;">  </div> </div> <div style="text-align: center; margin-top: 20px;">  </div> <div style="border: 1px solid black; border-radius: 15px; padding: 10px; margin-top: 20px; text-align: center;"> <p style="font-weight: bold; font-size: 1.2em;">Power Supply</p> <p>MODEL:SAW-1200500</p> <p>INPUT:100-240V~</p> <p>50-60HZ 0.3A</p> <p>OUTPUT:12V --- 500mA</p>  <p style="font-weight: bold; font-size: 1.5em;">CE</p> <p style="font-weight: bold; font-size: 1.2em;">Made in China</p>  </div>							
<p>CONFIDENTIAL YING YUAN ELECTRONICS CO.,LTD</p>							
SCALE: NONE				DO NOT SCALE DRAWING			
UNLESS OTHERWISE SPECIFIED ALL DIMENSIONS IN MILLIMETERS				SUPERSEDES			
DECIMAL: +/- 0.25MM FRACTION: +/- 1/32MM ANGULAR: +/- 1/2 DEG CH = MINUS DRAFT TH = PLUS DRAFT SURFACE FINISH SPECIFICATION: VARE IN MICROMETERS: 1UM = 1/10 MM 3				WALL THICKNESS = FRONT = PER SIDE EDGE = R FLATNESS = TIR CONCENTRICITY = TIR SURFACE FINISH SPECIFICATION: VARE IN MICROMETERS: 1UM = 1/10 MM 3			
PART NAME: NAME PLATE				DATED			
DESCRIPTIONS				SIZE			
DR. 骆艳芳				A4			
CH. 王吉海				SHEET 7 OF 8			
APP. 魏奇斌							
DATE 2009/1/17							

10.0 BOX DRAWING

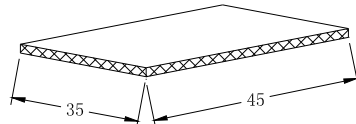
1. 100pcs 包装箱尺寸图



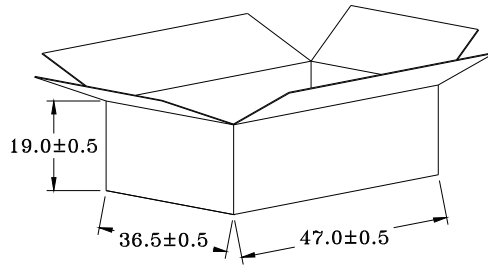
九刀卡



四刀卡



平板



外箱尺寸

两层刀卡

4刀卡: 9*2pcs

9刀卡: 4*2pcs

平板: 2pcs

Tolerance/公差: ±1

Unit/单位: cm

客户修改内容 / Customer modify	修改人/日期 Signature/date