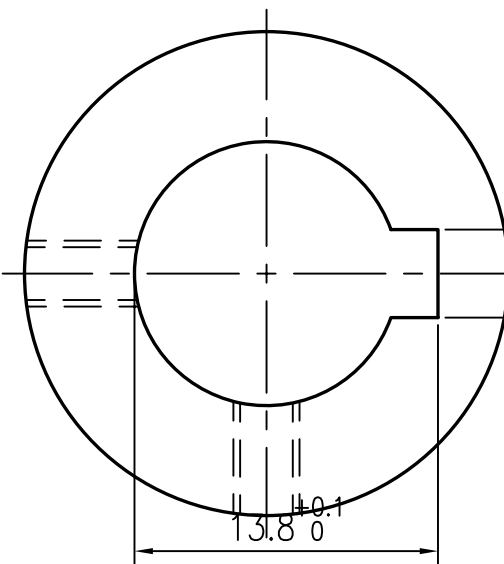


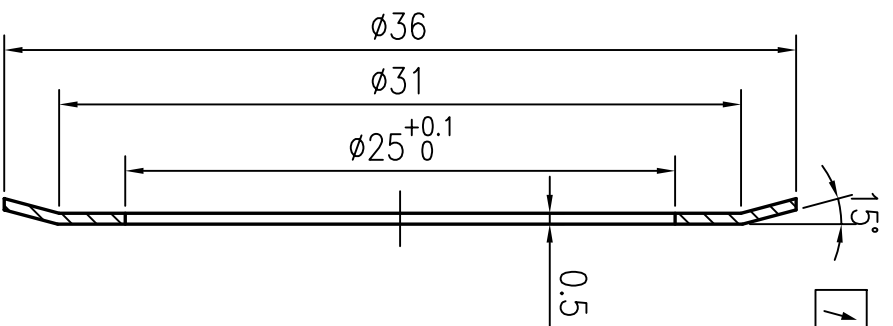
P向局部

0.05 A
4JS9(±0.015)



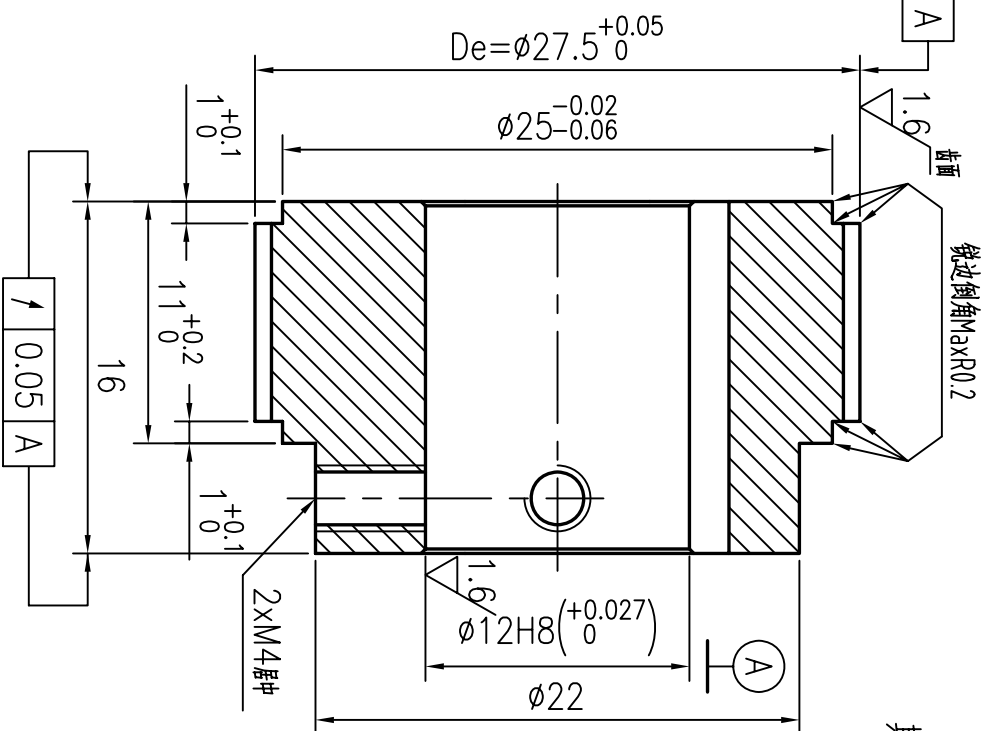
技术要求

- 1.未注倒角C0.2,锐边倒钝去毛刺;
Unquoted chamfer C0.5,break sharp edges
- 2.各表面不得有划伤,锈迹等缺陷;
All surfaces must be rust free and no scratch
- 3.未注尺寸公差按SO 2768-MK标准;
dimensions without tolerance according to 2768-MK
- 4.节距偏差:任意相邻两齿±0.03,90度圆弧内累计偏差在±0.1内;Pitch tolerance:within±0.03 for any neighboring two teeth within±0.1 for 90° arch
- 5.产品打字,装配紧定螺钉,Marking part No, Setscrews installed



FLANGE 510#

0.05 A



其余 3.2

标记	从数	更改文件号	签字	日期
设计		Zhang		
审核		huang		
工艺				

名称/Name:	同步轮
型号/Code:	GT2M,Z44
共	页
第	页

图号/Drawing No:	TRM4108_0
材料/Material:	LY12(2024-T6)
重量	
比例	3:1
更新/Rev	

Chengdu Leno Machinery Co.,Ltd
Tel:+86-28-65998825; Fax:+86-28-84862968
sales@cdleno.com; www.cdleno.com